

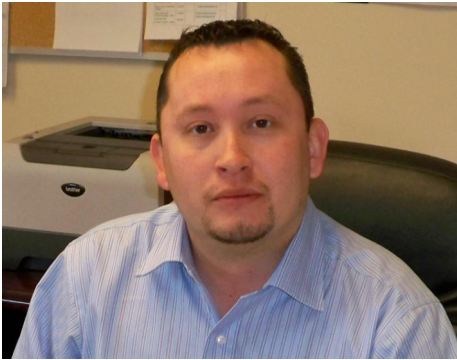


Annual Report 2011-2012



Statements in this Annual Report regarding SRDL's future financial and operating results, the development of subsidiaries, SRDL operating strategies, acquisitions and other statements that are not statements of historical fact are considered forward-looking statements. These forward statements are made as of the first publication date of this Annual Report, March, 2013, based on certain expectations, and we undertake no obligation to update these forward-looking statements.

MESSAGE FROM THE PRESIDENT/CEO



Thomas Many Heads
President/Chief Executive Officer

“SRDL Group of Companies has experienced a steady year of operations, internal growth & realignment within its core business areas of energy, agriculture, real estate/commercial and natural resources. First, a number of Nation operations were transferred to the SRDL Group by Siksika Leadership, including:

- ◆ Real estate assets via Siksika Holdings to SRDL in April 2011
- ◆ Siksika Tel assets and operations to SRDL in July 2011.
- ◆ Siksika Arts Cooperative operations & assets in June 2012
- ◆ Siksika Tribal Farms & Ranch operations & assets in January 2012.

I am pleased to report that as of the date of this report, all transitional activities have been initiated and/or near complete, notwithstanding subsequent revenue transfers from Siksika Treasury for the 2011 fiscal year. SRDL looks forward to integrating these operations into its Group of Companies operations over the 2012 fiscal year.

For a quick update on our Siksika Energy Oil Exploration Project. SRDL applied for and received sub surface leases from the Nation in late 2011. The project proposes to drill two (2) oil based targets in the Axe Flats region targeting oil producing formations. SRDL has worked with Nation regulatory agencies (Siksika Lands & Natural Resources) to process and acquire surface lease access for the last two months. It is anticipated that once approval is granted by IOGC, SRDL will be drilling the 100% owned test well by late summer 2012.

Other positive growth has been made including Siksika Tel customer base increase; property asset upgrades for better service delivery; increased gravel contract sales to external customers; and production growth in our agri-business operations.

Moving forward SRDL is focusing energy and resources at potentially establishing long term JV partnerships in the agriculture, energy and construction sectors. The Nation (and SRDL) are very close to formalizing an Understanding with Graham Industries focusing on various infrastructure projects throughout Siksika’s traditional territory. It is anticipated that a full partnership will be negotiated and implemented in the 2012 operating year. One other initiative worth noting is our Natural Gas to Power Project. SRDL is reviewing the feasibility of establishing a JV operation converting Natural Gas to Power, thereby realizing greater potential profits. Further research is required, however, this project shows great promise for a long term venture.

In closing, SRDL Group has experienced challenges due to lower production & revenue streams from natural gas operations within the last two years. Through a combination of corporate/business streamlining, cost reductions and new core projects and expansion to off-Nation market opportunities, SRDL is confident continued growth and prosperity for the Nations’ company will be assured. “

SHAREHOLDERS



CHIEF FRED RABBIT CARRIER

SIKSIKA NATION CHIEF & COUNCIL - 2010-2013



Front Row (l-r): Clarence Wolf Leg Sr., Janice Doore, Chief Fred Rabbit Carrier, LaVerna McMaster, Adrian Stimson

Back Row (l-r): Reynold Medicine Traveller, Carlon Big Snake, Jason Doore, Eldon Weasel Child, Kendall Panther Bone, Herman Yellow Old Woman, Hector Winnipeg, Guy Medicine Shield

BOARD OF DIRECTORS



KENDALL PANTHER BONE
SRDL CHAIRMAN OF THE BOARD



Clarence Wolf Leg
Board Member



Reynold Medicine Traveller
Board Member



Dr. Lyle Oberg
Board Member



Henry Murzen
Board Member



Roy Little Chief
Board Member

Community Investment

SRDL has the great opportunity to contribute to various causes throughout this fiscal year. As SRDL continues to generate revenue and expand business opportunities, the company is able to provide continued support both financially and in-kind.

Throughout this past fiscal year SRDL has had the honor to assist with the following:

- ◆ Siksika Minor Hockey Association—Year End Banquet
- ◆ Siksika Nation High School—Year End Awards
- ◆ Siksika Family Services—Back to School Dance Party
- ◆ Chief Old Sun School
- ◆ Community Christmas Hampers
- ◆ Annual Siksika Nation Celebration

COMMUNICATIONS



Maria Big Snake
Communications
Manager

In the Communications and Marketing area for SRDL, the main purpose is to lead the tasks of creating, implementing and overseeing an overall SRDL Communications and Marketing Plan; to effectively describe and promote SRDL and its subsidiaries; and to establish a communication protocol both internally and externally.

2011-2012 activities included providing technical support to CEO and Sr. Managers through policy review, BCR development, and business plan and budgeting.

Christmas Hamper Project—December 2010



Community BBQ—August 2010



PORTFOLIO OF COMMERCIAL VENTURES

Our business is organized into two business units: Commercial Ventures and Energy Resources. This structure provides the focus required to align our resources and development efforts to meet the demands of the dynamic markets we serve.



Tracy McHugh
Commercial Ventures
Manager

What a great year! With continued strength in management and fiscal responsibility, the Commercial Ventures team has been able to fulfill many of the targets set out in this fiscal year.

In meeting targets and deadlines the Commercial Ventures division is now ready to take on the much anticipated transfer of companies from the Nation. We look forward to working with the Siksika Arts Cooperative, Siksika Tribal Farms, Siksika Tribal Ranch. Commercial Ventures offers support while the transition of the new companies occurs.

SUBSIDIARY COMPANIES

SIKSIKA ECONOMIC DEVELOPMENT CORPORATION (SEDCO)



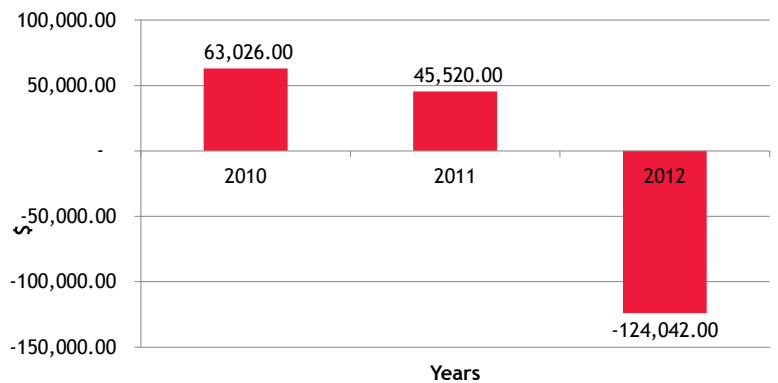
Dory Duck Chief
Facilities Operations
Coordinator

SEDCO remains at 100% occupancy. Occupants are comprised of the Siksika Tribal Administration departments, Siksika Family Services, Bank of Montreal and the Siksika Postal Outlet.

Throughout the year SRDL has ensured that all 12 staff has received updated training in first aid, safety, and WHIMIS.

In 2011-2012, Siksika Economic Development Corporation generated Revenue of \$ 834,405 against expenses of \$ 958,447 for net (\$ 124,042).

SEDCO - Excess of revenue over expenses



BDO



2012-2013 Targets

- ◆ Leases
- ◆ Provide continued quality office space for Siksika Nation Departments
- ◆ Continue to seek additional funds for necessary maintenance and renovations for the Tribal Administration/ Commercial Complex.

SIKSIKA BUSINESS CENTRE (SBC)

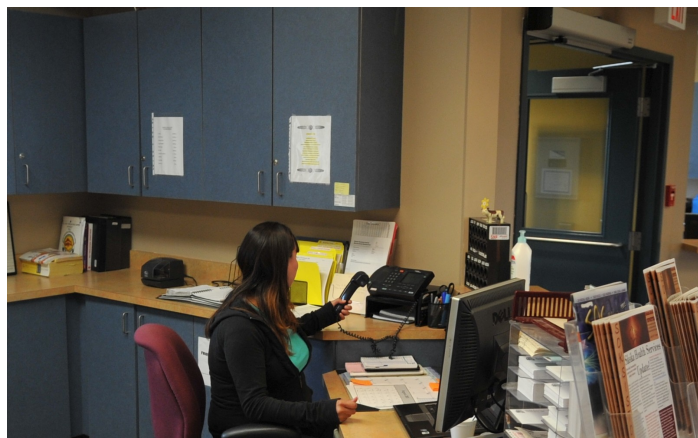


Clarence Wolf Child
SBC Maintenance

The Siksika Business Centre has completed all interior renovations and has been working towards full occupancy. With the renovation SBC was well equipped to take on much larger capacity workshops such as the Siksika Disability Services which included 260 active participants from all over Alberta. With the new media boards installed, SBC is now able to accommodate high tech workshops, video conferencing, all

while providing an updated look for all to be proud of. All staff have completed annual certification as per industry standards.

In 2011– 2012, Siksika Business Centre generated Revenue of \$329,104 against Expenses of \$318,063.13 for net \$11,040.48.



2012-2013 TARGETS

- ◆ Work towards long term rentals for office space
- ◆ 100% occupancy
- ◆ Continue to provide quality meeting room space for Nation Departments and the Siksika community.



Brad Yellow Old Woman
SBC Maintenance



SIKSIKA HOLDINGS INCORPORATED (SHI)



Darren Healy
Property Administrator

APPLEWOOD

100% occupied!! Our in house Property Administrator and Maintenance have made great changes throughout the last couple years, with our in house efforts to provide quality rental units we have secured great tenants, built a solid relationship with the Applewood Condo board and we now have a full waiting list.

SHI has maintained its place on the board and remains active in all decisions regarding the Applewood townhomes. All property taxes have been paid in full and SHI continues to ensure all city and land by-laws are adhered to.

SIKSIKA CALGARY OFFICE

SHI continues to lease to three main tenants. We are currently negotiating a fair market lease with tenants and hope to have negotiations completed soon.

All property taxes have been paid in full and SHI continues to ensure all city and land by-laws are adhered to.

KELOWNA PROPERTY

As per board motion in June 2011 the Kelowna property was put on the market. With the Kelowna market being at a standstill, sale opportunities and construction have been at a halt throughout this year.

All property taxes have been paid in full and SHI continues to ensure all city and land by-laws are adhered to.

In 2011-2012, Siksika Holdings Incorporated generated Revenue of \$657,918 against expenses of \$733,678 for net \$(75,760).



2012-2013 TARGETS

- ◆ Maintain 100% residential and commercial properties.
- ◆ Expand potential of current and potential property opportunities.

SIKSIKA VACATION RESORT COMPANY LIMITED (SVRCL)

As directed by the Siksika Chief and Council, SRDL has forwarded the annual payment of \$150,000 from the Hidden Valley Association to the SVRL Negotiation Team which is comprised solely of the Siksika Chief and Council. The Chairman of the Board for the Negotiation Team is Reynold Medicine Traveller. For more information regarding the current lease negotiations, please contact the Siksika Vacation Resort Negotiation Team.

In 2011-2012, Siksika Vacation Resort generated Revenue of \$ 306,137 against Expenses of \$189,877 for net \$16,260.

2012-2013 TARGETS

- ◆ To uphold SRDL obligations as stated in the current Co-Management Agreement.



SIKSIKA SERVICE STATION LIMITED (SSSL)



Donna Red Gun
Shift Supervisor

BACK IN BLACK!!!!

With strong management and fiscal responsibility, the Siksika Service Station has not only made tremendous strides as a small business, they have also made revenue. Since installing the new tank and pumps, the service station has been able to accommodate larger account clientele and service more vehicles at once.

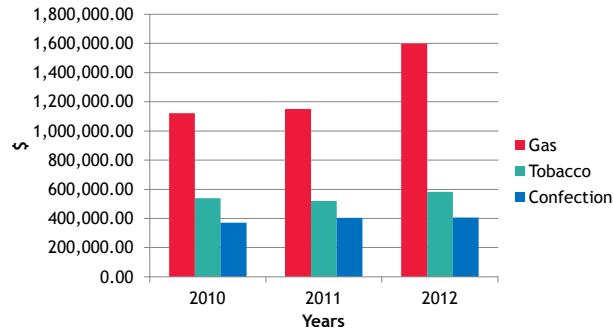
The service station is still eagerly awaiting an installation date for the POS system and the completion of the renovation design. Once we receive these the Services Station is on its way to full completion, of its 3 phase renovation.

In 2011-2012, the Siksika Service generated Revenues of \$2,587,756 against Expenses of \$2,554,799 for net \$32,957.

2011-2012 Targets

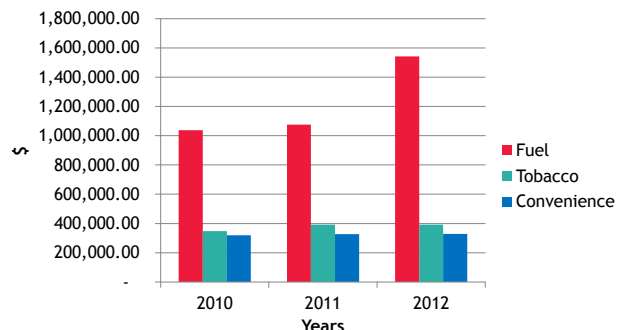
- ◆ Complete interior renovations
- ◆ Increase revenues
- ◆ Continue to provide quality customer service to the Siksika Nation

SSSL - Sales



BDO

SSSL - Cost of Sales



BDO



ENERGY

SIKSIKA ENERGY LP (SELP/SERC) - Oil & Gas Operations



Dwayne Big Old Man
SERC Operations Manager



Dale McMaster
Senior Production Accountant



Andrea Lagrelle
Land Administrator

STATEMENT OF OPERATIONS

Siksika Energy initiated a exploration program with Gas Processing Management Inc., Armstrong Exploration & Davenport Energy. It identified 6 potential targets for oil drilling. Of which Siksika Energy has to purchase the seismic data, that we do not already have. Siksika Energy also reviewed the Sandhills property and all of Siksika Nation.

Siksika Energy acquired land based on exploration program from identifying potential oil in this area of 8-30-021-23.

Siksika Energy initiated Phase 1 of program by acquiring the Mineral & Surface Leases from Indian Oil and Gas Canada (IOGC).

In 2011-2012, Siksika Energy generated Revenue of \$1,840,006 against expenses of \$3,645,150 for net \$(1,805,144).

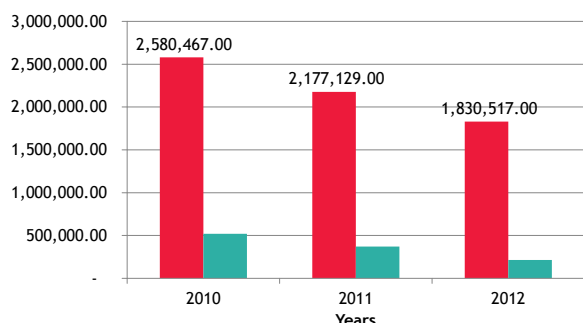
OIL & GAS PRODUCTION

The partnership's production in 2011/12 was 81,924 BOE, down 9% from 91,136 in 2010/11. Natural gas production continued to account for +95% of production volumes on an oil equivalent basis for the year.

PRODUCTION REVENUES

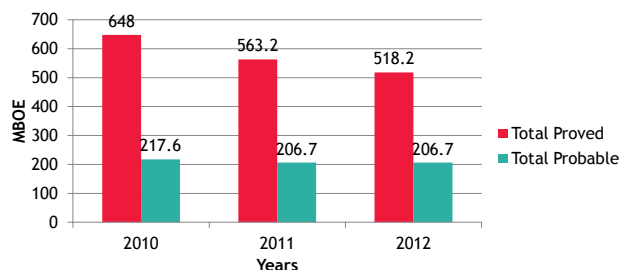
Production revenues for the year decreased by 16 % to \$1,840,006 for the year. The principal contribu-

SELP Gross revenues and Royalties



BDO

SELP- Reserves



BDO

tors to the decrease in revenues were a decline in natural gas production volumes.

ROYALTIES

Oil & Gas royalties paid during the year were \$212,870 , an average rate of 11 % of production.

Siksika Energy LP paid IOGC royalties on its share of production during the year which was credited to the accounts of the Siksika Nation for 2011-2012.

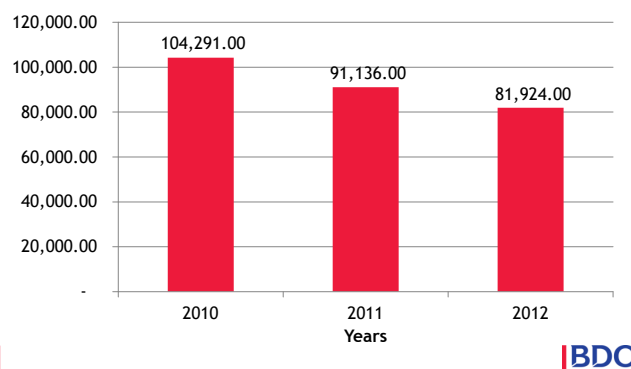
OPERATING COSTS

Operating costs for the fiscal year amounted to \$1,757,110 (gas gathering, processing, operating). In 2011/12, operating costs were \$1,678,268 , a marginal increase of 4 %.

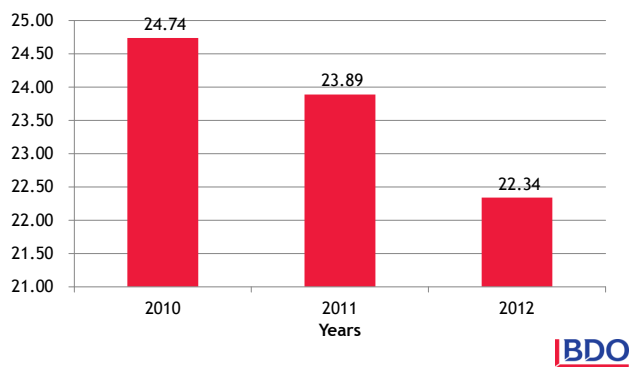
Many of these costs are fixed in relation to the Partnership's mineral and surface lease costs, and gas well production costs.



SELP BOE of production



SELP dollars of revenue per BOE



SIKSIKA ENERGY OUTLOOK 2012-2013

- ◆ Siksika Energy will commence Phase 2 of the drilling program to commence in 3rd quarter of 2012/13.
- ◆ Employment
- ◆ Use of Nation owned companies for third party contracts.
- ◆ Continue to work closely with Siksika Land Management and Siksika Natural Resources.

PORTFOLIO OF ENERGY RESOURCES

SUBSIDIARY COMPANIES

Our business is organized into two business units: Commercial Ventures and Energy Resources. This structure provides the focus required to align our resources and development efforts to meet the demands of the dynamic markets we serve.

SIKSIKA ROCK PRODUCTS

STATEMENT OF OPERATIONS (SRP)

Siksika Rock Products was successful in securing contracts with Standard General & Thorinson Construction. For these contracts, Siksika Rock Products was able to employ 8 seasonal workers at the gravel pit.

To complete these contracts SRP used the quality services of E&K Trucking. E&K Trucking is a business that is 100% owned and operated by a Siksika Nation member.

During these contracts, SRP crushed an additional 60,000 tonnes of aggregate for future sales. Arjon Construction was awarded the crushing contract.

SRP has continued to build a strong work relationship with Siksika Public Works and continues to re-stock their aggregate needs.

SRP made a bid to supply the City of Calgary ring road & airport construction with Highway Technical Services.

In 2011-2012, the Siksika Rock Products generated Revenues of \$443,951 against Expenses of \$621,489 for net \$(177,538).



SRP OUTLOOK FOR 2012-2013

- ◆ SRP continues to work on securing contracts that will enable the company to supply aggregate to viable businesses off-reserve.
- ◆ Expand equipment inventory to include gravel hauling truck(s) to augment commercial/retail services offered.
- ◆ Finalize the renewal of the SRP Permit with AANDC (formally INAC).

SIKSIKA IRRIGATION LAND CORPORATION (SILC)



Cedric Solway
SILC Coordinator

STATEMENT OF OPERATIONS

SILC had another successful year in the field in 2011-2012. SILC generated total gross revenues \$1,204,436, expense of \$1,050,380 and net earnings of \$154,056.

CROP PRODUCTION & MAINTENANCE OPERATIONS

SILC continues to operate 640 acres of irrigated land on Section 1-020-22-W4M. These land were assumed from previous tenant New Dale. SILC is in its second year of crop production for this portion of land.

A total of approximately 1100 acres was farmed for wheat production. This total includes farming on both dry and irrigated lands.

Routine and capital maintenance activities continue to be a part of the field operations team. SILC has incorporated an Irrigation Field Technician under the supervision of the SILC Coordinator.

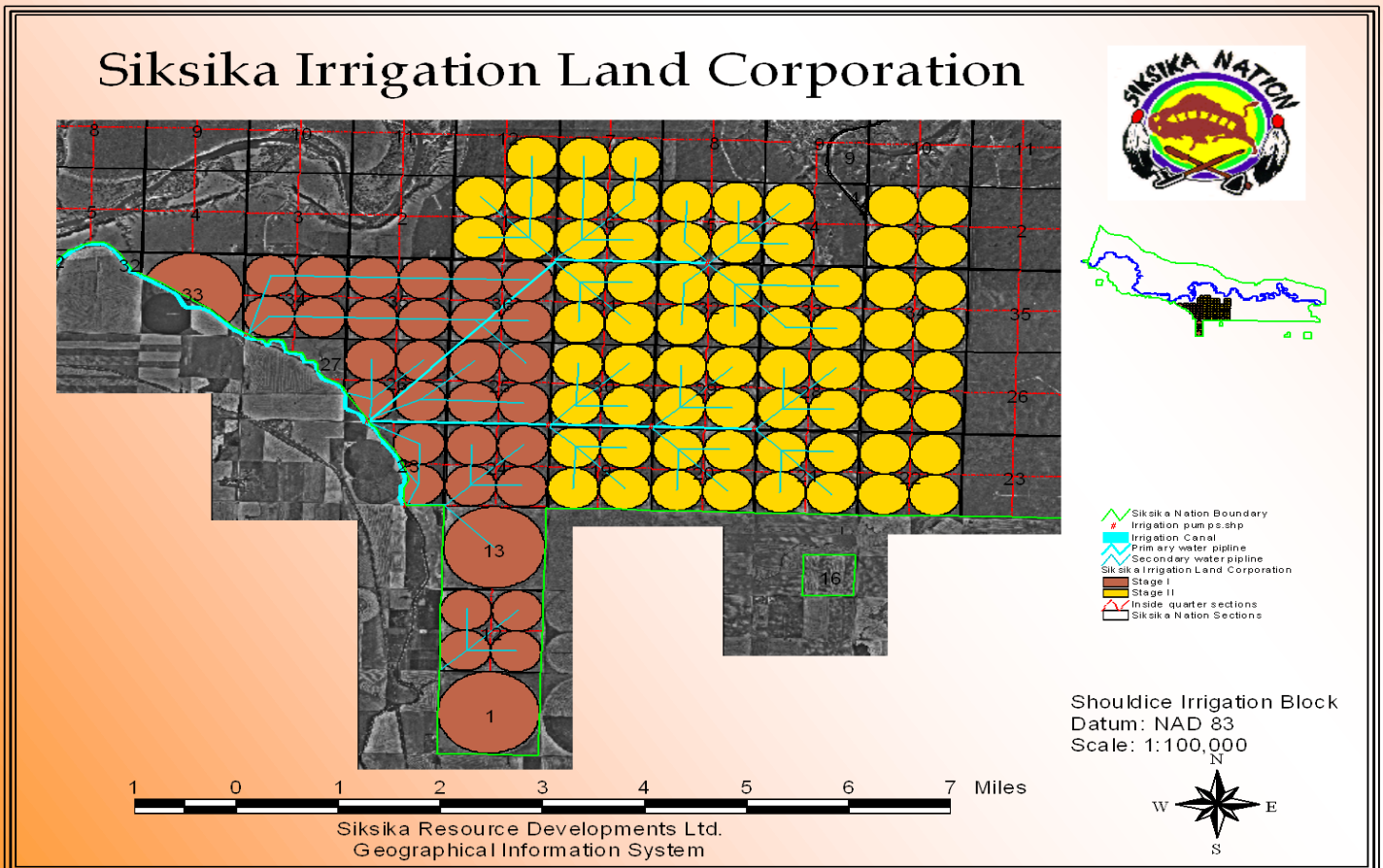
IRRIGATION HEAD LEASE – TENANT OPERATIONS

SILC leases a total of 6372.5 acres through a Head lease with the Siksika Nation. In 2011– 2012 SILC sublet irrigated lands to two tenants. Kodiak and Barr-Ag continue to use irrigated lands, buildings, pivot systems and equipment.

SILC and AANDC continue to negotiate a long-term head lease.

The Irrigation Field Technician is employed on a season to season basis to assist with the regular maintenance of the pivots.

In 2011-2012, the Siksika Irrigation Land Corporation generated Revenues of \$1,204,436 against Expenses of \$1,050,380 for net \$154,056.

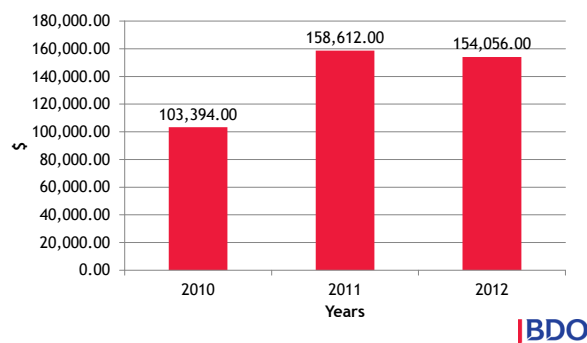




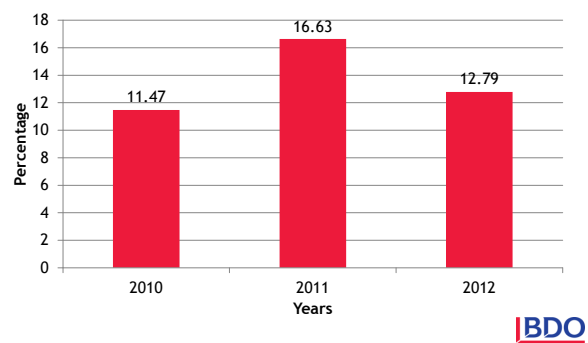
SILC OUTLOOK FOR 2012-2013

- ◆ SILC will continue negotiations to secure a 15 year head lease with INAC.
- ◆ Ongoing efforts are being examined to enter a joint venture with one of the existing tenants of SILC.
- ◆ In 2012/2013 SILC will be working closely with Siksika Farms.
- ◆ SILC would like to work towards upgrading technologies of pivot operations to be competitive with the industry standards. (FieldNet)

SILC Net Income



SILC Gross Profit Margin



FINANCES

Highlights of the company's financial results and what's driving the improvements

OVERVIEW

The 2011-2012 Siksika Resource Developments Limited (SRDL) & Subsidiaries fiscal year results are expressive of our activities in Year 3 of our overall 5 Year Business Plan as approved by our Board of Directors and Shareholders. SRDL & its subsidiaries maintained consistent operations and stable outcomes. In the face of current economic challenges, SRDL and its subsidiaries have remained financially consistent and achieved a balanced operating position for a majority of its subsidiaries. Our realities in the non-renewable resource-dependent subsidiaries are reflective of the impacts of suppressed oil and gas activity across Alberta and delayed external approval processes for aggregate projects.

For the internal operations of SRDL, focus was on streamlining accounting processes and preparing for the transition of a number of operations from the Siksika Nation to the SRDL umbrella which will be fully managed in 2012-2013. The main activities included addressing corporate legal requirements, setting up accounting entities and accommodating transferred employees.

For annual audit reporting, each subsidiary operates as an individual entity with its own set of books and undergoes

an independent assessment by BDO Canada, our external auditors who prepare and combine the financial positions of all entities into a Consolidated Audited report. BDO Canada issued an unqualified opinion on the SRDL & Subsidiary Consolidated Financial Statements of SRDL & its group of subsidiaries as of March 31, 2012 which are presented in conformity with International Financial Reporting Standards (IFRS). Consolidated Audited financial statements may be viewed in the financial section of this Annual Report.

Siksika Holdings Financial Statements are reported independently of SRDL Consolidated Financials as SRDL manages the operations on behalf of the Siksika Nation. BCR # 2011-02 authorizes the full transition of Holdings Assets and operations and completion of the transition is expected in 2012-2013.

CONSOLIDATED SUMMARY

Our income- where the \$\$ revenues come from

INTERNATIONAL FINANCIAL REPORTING STANDARDS ("IFRS")

The 2011-2012 Consolidated Financial Statements are SRDL's first set of financials prepared in accordance with the International Financial Reporting Standards (IFRS). The IFRS Standards required SRDL to retrospectively apply all effective IFRS standards back to the date of adoption which was April 10, 2010. Therefore, as a first time adopter of IFRS, the 2010-2011 Financial Statements were required to be reviewed and prepared as compara-

tive financial information under IFRS. Therefore, these accompanying financials reflect the financials restated under IFRS for fiscal years 2010, 2011 and 2012.

In the 2011-2012 Fiscal year, SRDL and its group of companies generated \$7,563,387 overall, an increase of \$857,756 compared to 2010-211. Revenues arise from petroleum and natural gas sales, fuel sales, building and land rental, gravel, tobacco, convenience, grain sales, resort fees and Nation capital trust monies.

Our expenses – how the \$\$ are spent

SRDL incurred combined Cost of Sales expenses of \$5,018,245 for a Gross Profit of \$2,545,592 combined. The combined expenses were attributed to combined Amortization and Depletion expenses of \$1,500,507 and Administrative and General Expenses of \$3,112,962 combined.

Overall for 2011, SRDL and its subsidiaries incurred a combined net loss of \$2,146,497.

Our assets – what we own

The Consolidated current assets for 2011-2012 are \$8,198,766 and non-current assets are \$15,107,108 for Total Assets of \$23,305,874.

The Current Liabilities are \$1,402,214 and Non-current Liabilities are \$3,030,146 for Total Liabilities of \$4,432,360.

For 2011-2012, Shareholder equity is \$12,288,563.

SUMMARY OF COMBINED 2012 HIGHLIGHTS

As shown in the accompanying Consolidated Audited Financial statements, the following are selected financial highlights as of March 31, 2012 for the combined entities:

- Cash decrease of \$1.2 million
- Receivables include \$1.2M due from Indian Oil and Gas Canada
- Dispute over \$120,000 owed by the Nation re rent
- No new wells were drilled, but SRDL did spend \$309K on developing Oil and gas properties and \$425K on property plant and equipment
- Total revenue increased by \$857K to \$7.6M (13%)
- Decrease in oil and gas sales of \$354K to \$1.8M (16%)
- Increase in gain sales of \$295K to \$358K (468%)
- Increase in gravel revenue of \$387K to \$444K (679%)
- Increase in fuel sales of \$447 to \$1.6M (39%)
- Grant revenues of \$181K received in year
- Other revenues remained much the same as 2011
- Total expenses increased by \$900K to \$9.7M (10%)
- Cost of sales increased \$952K or 23% to \$5.02M
- Admin and General expenses decreased \$19K to \$1,089K
- Decrease in salaries and wages of \$128K to \$1.6M (7%)
- Increase in Consulting fees of \$72K to \$228K (46%)
- Project development costs of \$203K (covered by grant)
- SiksikaTel was transferred to SRDL's management oversight in January 2012. Transition of revenues and accounts will be complete by April 1, 2012.

SRDL ACCOUNTS STAFF

Robin Mitchell

Chief Finance Manager



Colleen Two Horns

Senior Accountant



Frank Medicine Shield

Junior Accountant



Christa Rabbit Carrier

HR Coordinator



Donna Fraser

Payroll Administrator

FINANCIAL HIGHLIGHTS

TABLE OF CONTENT

SRDL Management Responsibility	19
SRDL Combined Statements of Financial Position	20
SRDL Combined Statement of Comprehensive Income	21
SRDL Combined Statement of Change in Equity	22
SRDL Combined Statement of Cash Flows	23
SRDL Summary (Charts)	24
Siksika Holdings Inc. Statement of Cashflows	25
Siksika Holdings Inc. Balance Sheet	26
Siksika Holdings Inc. Statement of Earnings and Retained Earnings	27



MANAGEMENT RESPONSIBILITY

Siksika Resource Developments Ltd.

Post. Office Box 1520
Siksika, Alberta T0J 3W0
Telephone (403) 734-5244 Fax (403) 734-5342 • Calgary Direct Line (403) 264-7250

July 2012

To the Directors of Siksika. Resource Developments Ltd.:

Management is responsible for the preparation and presentation of the accompanying combined financial statements, including responsibility for significant accounting judgments and estimates in accordance with Canadian generally accepted accounting principles. This responsibility includes selecting appropriate accounting principles and methods, and making decisions affecting the measurement of transactions in which objective judgment is required.

In discharging its responsibilities for the integrity and fairness of the combined financial statements, management designs and maintains the necessary accounting systems and related internal controls to provide reasonable assurance that transactions are authorized, assets are safeguarded and financial records are properly maintained to provide reliable information for the preparation of financial statements.

The Board of Directors is composed primarily of Directors who are neither management nor employees of the Company. The Board is responsible for overseeing management in the performance of its financial reporting responsibilities. The Board has the responsibility of meeting with management and external auditors to discuss the internal controls over the financial reporting process, auditing matters and financial reporting issues. The Board is also responsible for recommending the appointment of the Company's external auditors.

BDO Canada LLP, an independent firm of Chartered Accountants, is appointed by the Directors to audit the combined financial statements and report directly to them; their report follows. The external auditors have full and free access to and meet periodically and separately with both the Board and management to discuss their audit findings.

Siksika Resource Developments. Ltd.
 AMENDED COMBINED CONSOLIDATED STATEMENTS OF FINANCIAL POSITION
 Expressed in Canadian Dollars



As at	March 31, 2012 (Amended)	March 31, 2011 (Note 26)	April 1, 2010 (Note 26)
Assets			
Current assets			
Cash and cash equivalents	\$5,388,550	\$6,645,233	\$7,669,007
Trade and other receivables (Note 5)	1,956,616	2,191,439	815,942
Inventories (Note 6)	246,100	29,279	26,117
Prepaid expenses and deposits	30,951	18,590	8,409
Amounts due from related parties (Note 19)	576,549	625,084	53,668
Total current assets	8,198,766	9,509,625	8,573,143
Non-current assets			
Exploration and evaluation assets (Note 8)	309,336	-	-
Property, Plant and equipment (Note 8)	14,780,437	15,721,789	17,350,982
Available for sale investment (Note 9)	1	1	1
Deferred project costs (Note 10)	17,334	17,334	17,334
Total non-current assets	15,107,108	15,739,124	17,368,317
Total assets	\$23,305,874	\$25,248,749	\$25,941,460
Liabilities and shareholder's equity			
Current liabilities			
Trade and other payables (Note 11)	934,234	961,592	739,120
Due to related parties (Note 19)	123,685	123,685	-
Deferred revenue (Note 12)	119,849	140,681	140,681
Deferred infrastructure funding (Note 13)	224,446	224,446	224,446
Capital lease obligation	-	-	29,760
Total current liabilities	1,402,214	1,450,404	1,134,007
Non-current liabilities			
Deferred revenue (Note 12)	55,725	-	84,956
Capital lease obligation	-	-	16,688
Decommissioning liability (Note 15)	2,974,421	2,778,334	2,698,027
Total non-current liabilities	3,030,146	2,778,334	2,799,671
Total liabilities	4,432,360	4,228,738	3,933,678
Shareholder's equity			
Share capital (Note 16)	13	13	13
Contributed and other surplus (Note 16)	7,113,647	7,113,647	7,113,647
Retained earnings	12,288,563	12,810,430	12,638,703
Total equity attributable to shareholder	19,402,223	19,924,090	19,752,363
Beneficiary of Siksika Energy Resource Trust (Note 14)	(528,709)	1,095,921	2,255,419
Total equity	18,873,514	21,020,011	22,007,782
Total liabilities and shareholder's equity	\$23,305,874	\$ 25,248,749	\$ 25,941,460

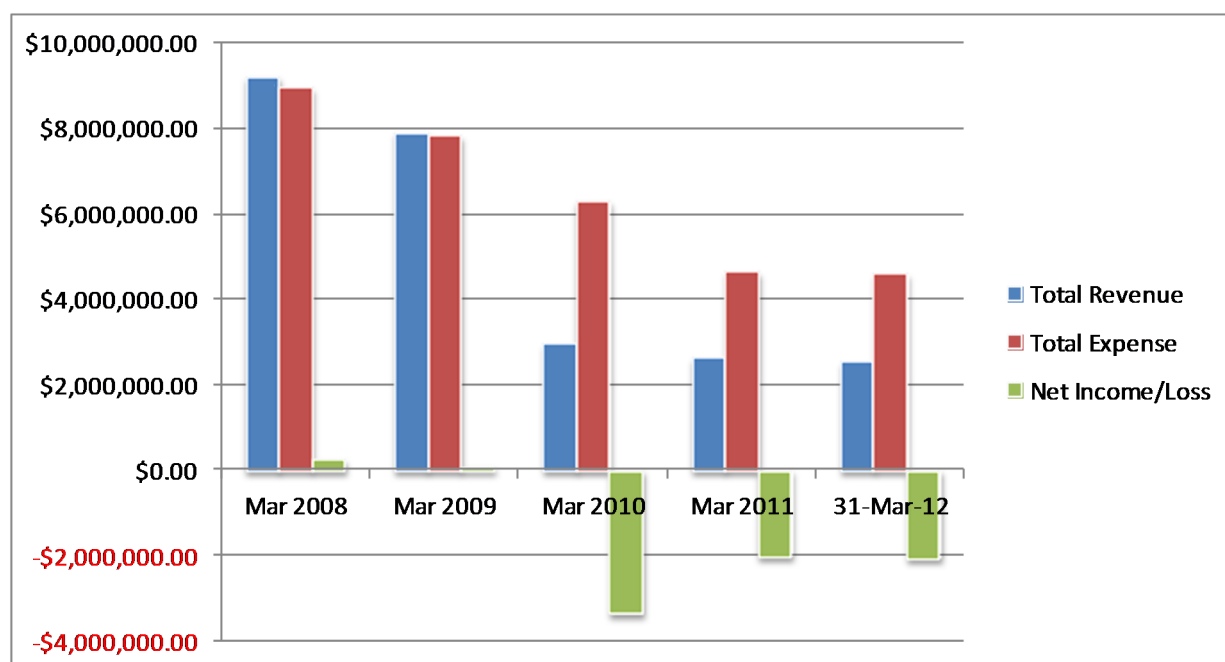
Siksika Resource Developments Ltd.

AMENDED COMBINED CONSOLIDATED STATEMENTS OF COMPREHENSIVE INCOME

Expressed in Canadian Dollars

	2012 (Amended)	2011 (Note 26) (Amended)
For the years ended March 31,		
Revenue (Note 22)	\$7,563,837	\$6,707,081
Cost of sales (Note 23)	5,018,245	4,066,797
Gross Profit	2,545,592	2,640,284
Expenses		
Amortization expenses (Note 23)	1,500,507	1,667,6609
Administrative and general expenses (Note 23)	3,112,962	2,984,176
Loss from operations	(2,067,877)	(2,011,552)
Other expenses		
Financing expense	(101,438)	(134,670)
Other income (Note 22)	22,818	1,158,451
Loss and comprehensive income for the year	\$(2,146,497)	\$(987,771)
Loss and comprehensive income attributed as follows:		
Losses attributed to beneficiary of Siksika Resource Trust	\$(1,624,630)	\$(1,159,498)
Common shareholders	(521,867)	171,727
	\$(2,146,497)	\$(987,771)

Five Year Performance— Consolidated Income Statement



Siksika Resource Developments Ltd.

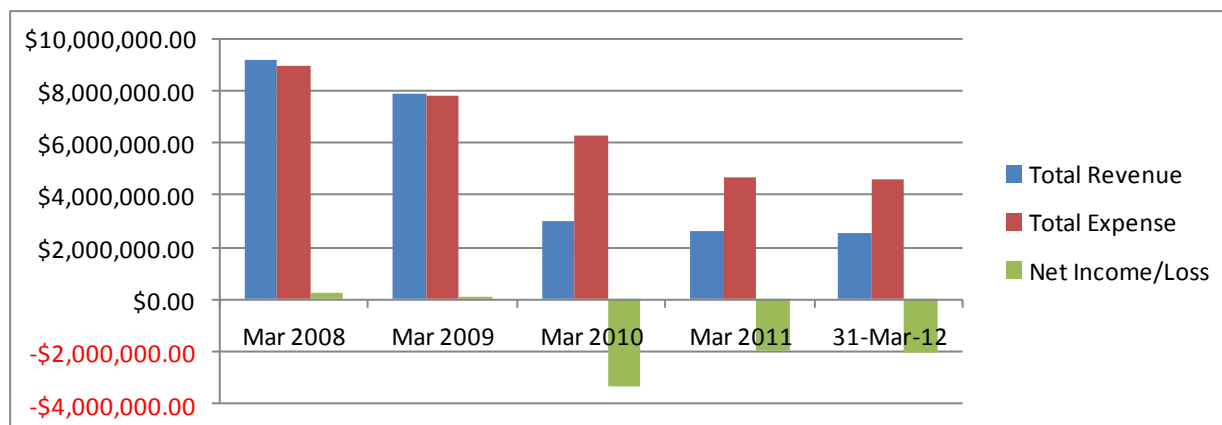
AMENDED COMBINED CONSOLIDATED STATEMENTS OF CHANGES IN EQUITY

Expressed in Canadian Dollars

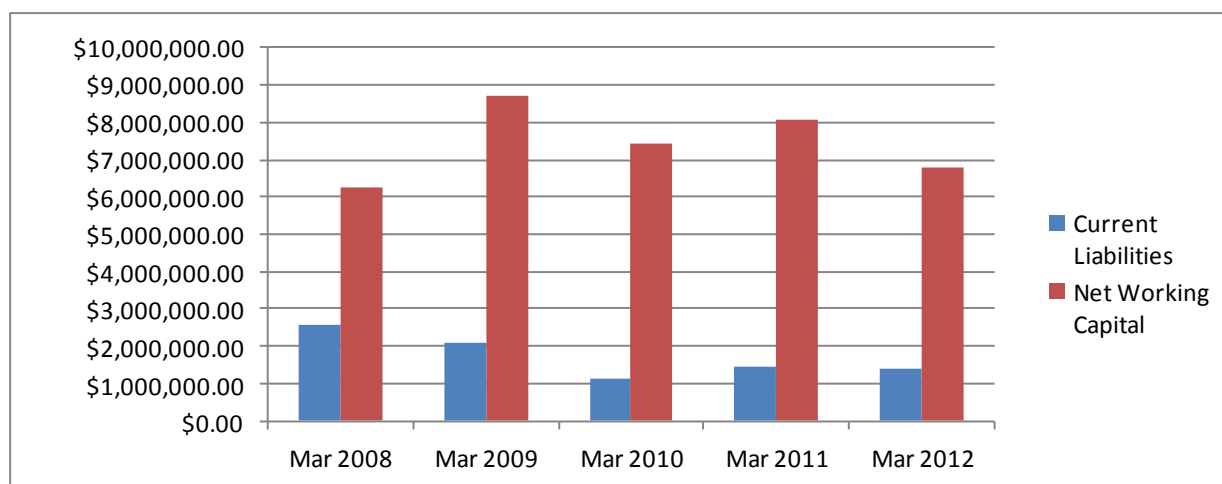
For the years ended March 31, 2012 and 2011

	Share capital	Contributed surplus	Retained Earnings (Amended)	SERT (Note 14) (Amended)	Total
Balance at April 1, 2010	\$ 13	\$7,113,647	\$ 12,638,703	\$2,255,419	\$22,007,782
Net income (loss) for the year	-	-	171,727	(1,159,498)	(987,771)
Balance at March 31, 2011	\$ 13	\$ 7,113,647	\$ 12,810,430	\$1,095,921	\$ 21,020,011
Balance at April 1, 2011	\$ 13	\$ 7,113,647	\$ 12,810,430	\$1,095,921	\$ 21,020,011
Net loss for the year	-	-	(521,867)	(1,624,630)	(2,146,497)
Balance at March 31, 2012	\$ 13	\$ 7,113,647	\$ 12,288,563	\$(528,709)	\$ 18,873,514

Five Year Performance—Consolidated Balance Sheet



Five Year Performance—Working Capital





Siksika Resource Developments Ltd.

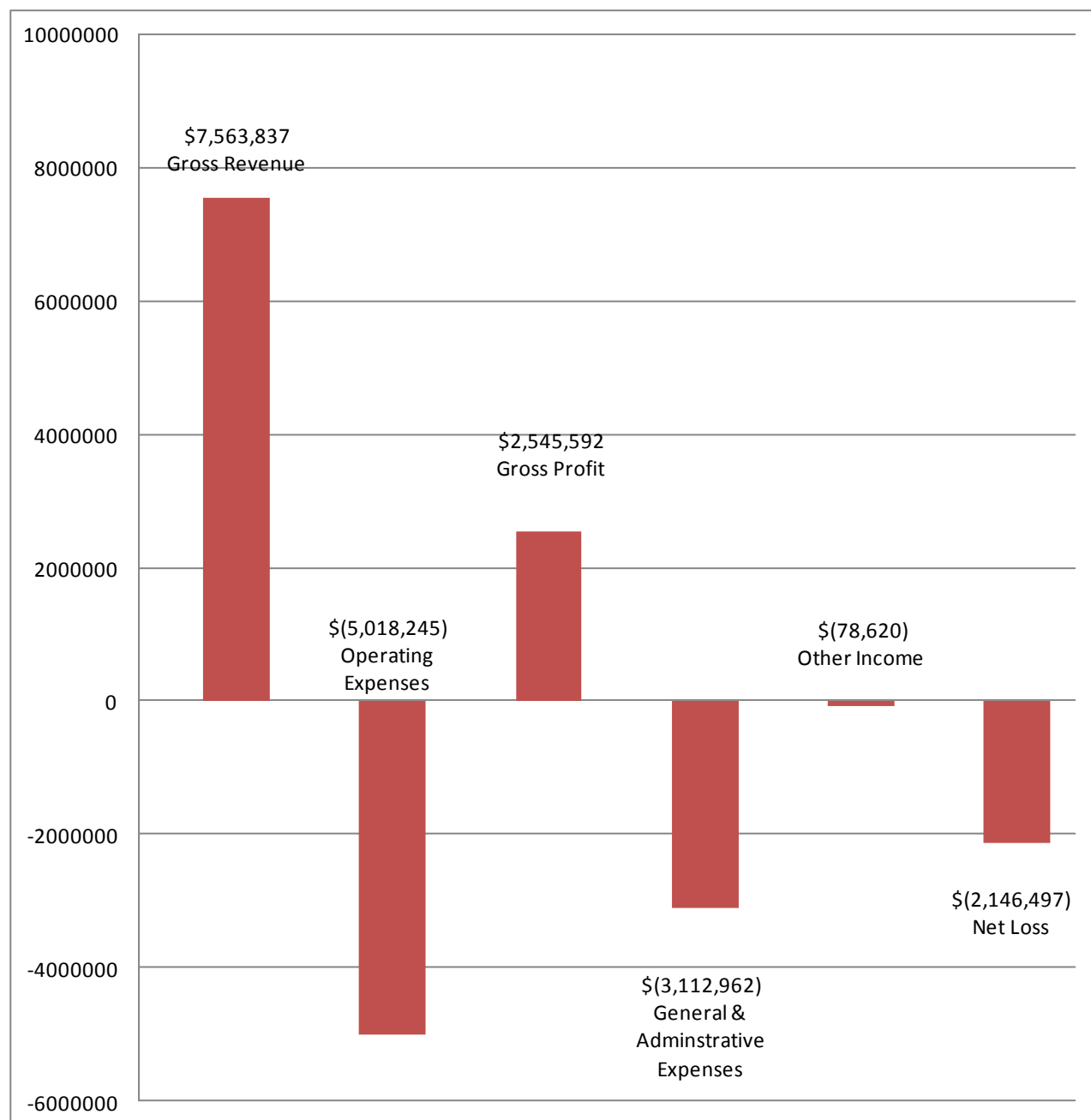
AMENDED COMBINED CONSOLIDATED STATEMENTS OF CASH FLOWS

Expressed in Canadian Dollars

For the years ended March 31,	2012	2011
Cash flows from operating activities		
Net loss and comprehensive loss for the year	\$ (2,146,497)	\$ (987,771)
Adjustments to reconcile loss to net cash used in operating activities:		
Amortization and depletion	1,500,507	1,667,660
Accretion	62,032	74,677
Gain on disposal of equipment	-	(15,263)
Deferred revenue recognized in resort fees	-	(84,956)
	<u>(583,958)</u>	<u>654,347</u>
Changes in non-cash working capital balances:		
Trade and other receivables	234,823	(1,375,497)
Inventories	(216,821)	(3,161)
Prepaid expenses and deposits	(12,361)	(10,181)
Trade and other payables	(27,358)	222,472
Deferred revenue	34,893	-
Repayments from (advances to) related parties	48,535	(447,731)
Total cash outflows from operating activities	<u>(522,247)</u>	<u>(959,752)</u>
Cash flows from investing activities		
Acquisition of exploration and evaluation asset	(309,336)	-
Acquisition of property, plant and equipment	(425,100)	(17,574)
Total cash outflows from investing activities	<u>(734,436)</u>	<u>(17,574)</u>
Cash flows from financing activities		
Repayment of capital lease obligation	-	(46,688)
Total cash outflows from financing activities	<u>-</u>	<u>(46,448)</u>
Total decrease in cash during the year	(1,256,683)	(1,023,774)
Cash and cash equivalents at beginning of year	6,645,233	7,669,007
Cash and cash equivalents at end of year	<u>\$ 5,388,550</u>	<u>\$ 6,645,233</u>

Financial Statement Charts

SRDL SUMMARY—2011/2012



Financial Statements—Siksika Holdings Inc.

Siksika Holdings Inc.

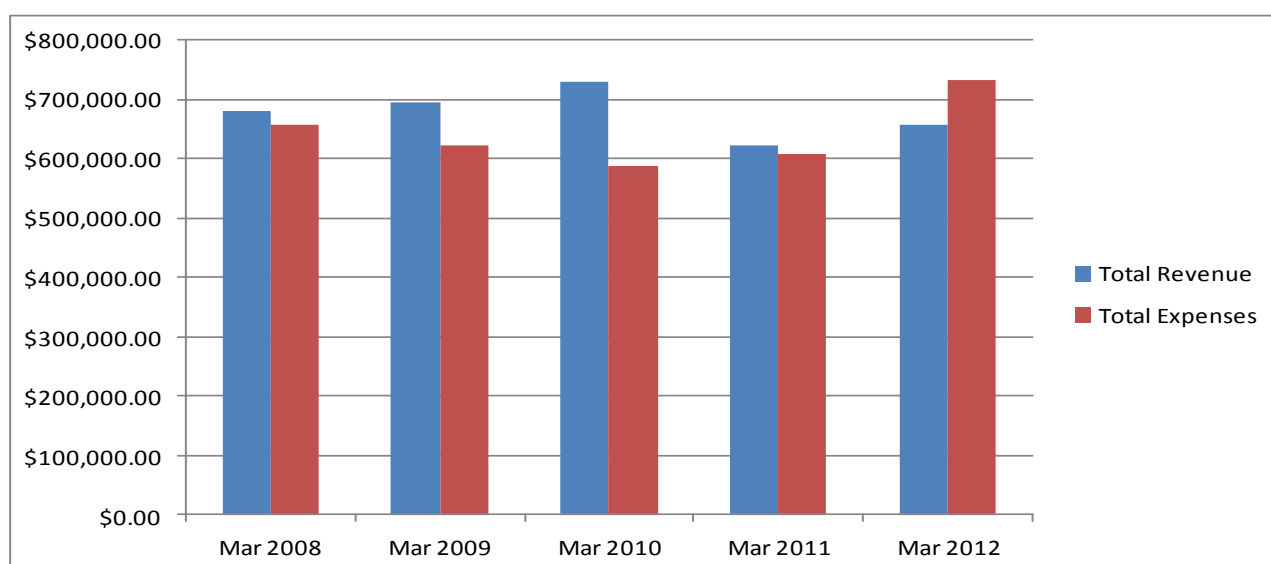
STATEMENT OF CASH FLOWS

At March 31, 2012

(Unaudited—see notice to reader)

	2012	2011
Cash provided by (used for) the following activities		
Operating activities		
Net earnings (loss)	(75,760)	15,456
Amortization	112,930	116,455
	37,170	131,911
Changes in working capital accounts		
Accounts receivable	(5,255)	34,845
Prepaid expenses and deposits	(34)	(29,232)
Accounts payable and accruals	5,134	(55,821)
Customer deposits	7,440	(4,200)
	44,455	77,503
Financing activities		
Repayments of long-term debt	(25,419)	(28,935)
Interest accrued on long-term debt	-	36,157
Advances from affiliate	506	-
Repayment of advances from related parties	(110,226)	(914)
	(135,139)	6,308
Investing activities		
Purchases of property and equipment	(3,200)	(11,741)
Increase in cash resources	(93,884)	72,070
Cash resources, beginning of year	550,426	478,356
Cash resources, end of year	456,542	550,426

Five Year Performance—Consolidated Income Statement (SHI)



Financial Statements—Siksika Holdings Inc.

Siksika Holdings Inc.

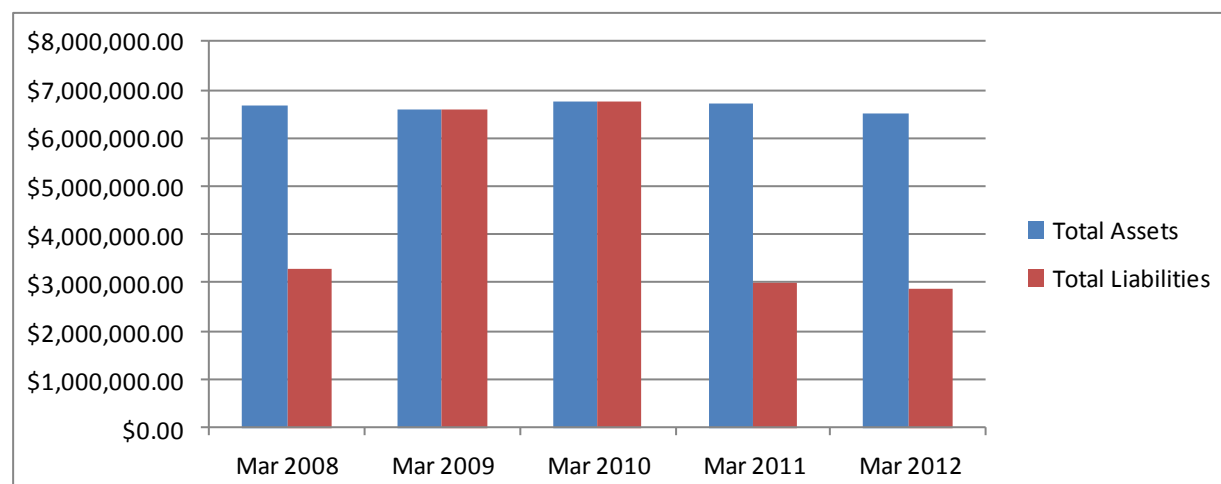
BALANCE SHEET

At March 31, 2012

(Unaudited—see notice to reader)

	2012	2011
Assets		
Current		
Cash	456,542	550,426
Accounts receivable	32,622	27,367
Prepaid expenses and deposits	29,266	29,232
	518,430	607,025
Property and equipment (Note 1)	5,983,697	6,093,426
	6,502,127	6,700,451
Liabilities		
Current		
Accounts payable and accruals	39,209	34,074
Customer deposits	14,040	6,600
Current portion of long-term debt (Note 2)	28,005	29,726
	81,254	70,400
Long-term debt (Note 2)	1,417,993	1,441,691
Advances from related parties	1,374,709	1,484,429
	2,873,956	2,996,520
Shareholder's Equity		
Retained earnings	3,628,171	3,703,931
	6,502,127	6,700,451

Five Year Performance—Balance Sheet (SHI)



Financial Statements—Siksika Holdings Inc.

Siksika Holdings Inc.

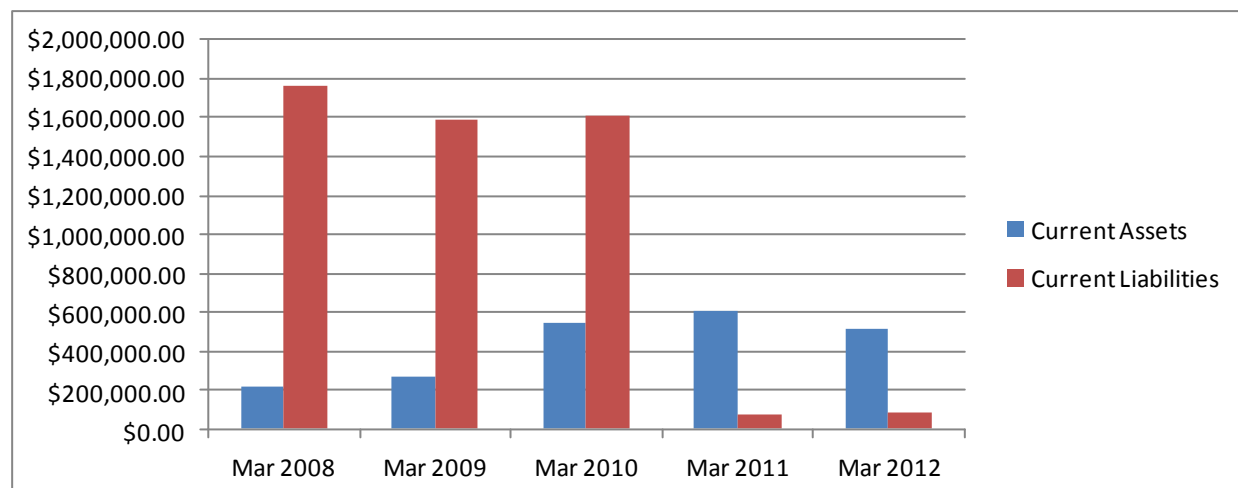
STATEMENT OF EARNINGS (LOSS) AND RETAINED EARNINGS

At March 31, 2012

(Unaudited—see notice to reader)

	2012	2011
Revenue		
Band revenue	340,000	300,500
Rental income	310,510	318,735
Miscellaneous	2,399	-
Interest	5,009	3,129
	657,918	622,364
Expenses		
Amortization	112,930	116,455
Bad debts	14,972	-
Consulting fees	26,189	-
Condominium fees	38,918	38,832
Interest and bank charges	1,219	4,241
Interest on long-term debt	88,567	85,327
Management fee	80,004	44,940
Office	17,611	15,695
Professional fees	35,349	25,954
Property taxes	61,080	73,834
Repairs and maintenance	55,646	71,725
Sub-contracts	1,200	-
Salaries, wages and benefits	137,729	78,344
Telephone, fax and internet	114	624
Travel	4,430	2,075
Utilities	57,720	48,862
	733,678	606,908
Net earnings (loss)	(75,760)	15,458
Retained earnings, beginning of year	3,703,931	3,688,475
Retained earnings, end of year	3,628,171	3,703,931

Five Year Performance—Working Capital (SHI)





SRDL MAIN OFFICE

Box 1520

Siksika, Alberta

T0J-3W0

Phone: (403) 734-5244

Calgary Direct: (403) 264-7250

Toll Free: 1-866-687-8007